

Procedural Information

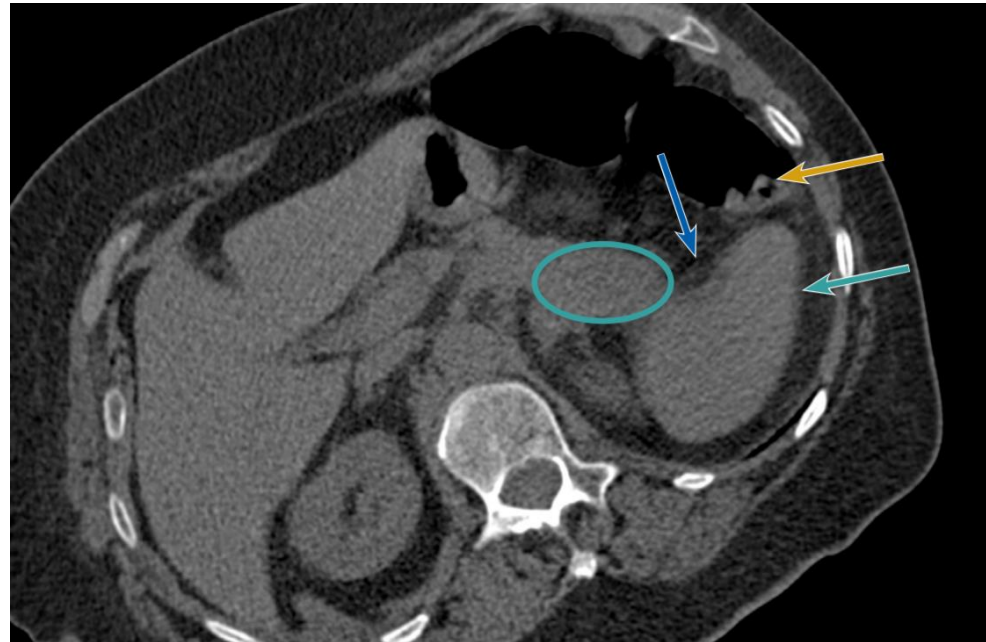
Date of procedure: August 2016
Location: Strasbourg, France
Hospital: University Hospital
of Strasbourg
Physician: Afshin Gangi, MD

Biopsy in the pancreatic tail

Case Description

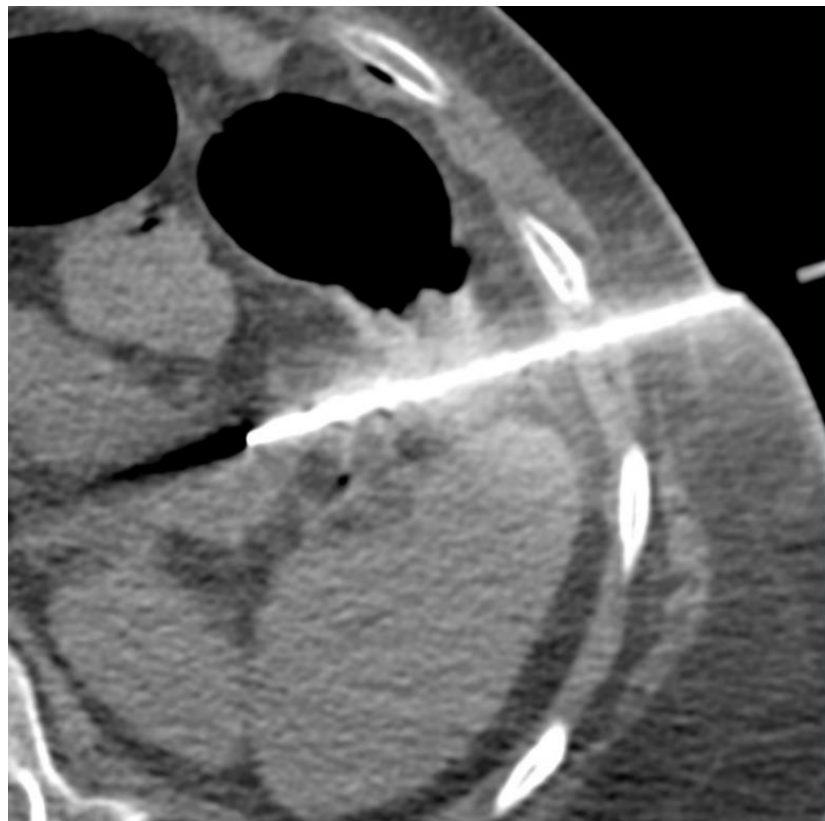
In this case, Gangi-SoftGuard[®] was used for biopsy of a 30 mm sized mass in the pancreatic tail.

The spring-loaded blunt tip stylet made it possible to safely pass the needle close to the spleen and colon, and biopsy could be performed. Pathologic specimens proved that the lesion was consistent with a pancreatic adenocarcinoma.



Target point marked with circle. Nearby organs interfering with the needle pathway to target include the spleen (turquoise) and its hilum (blue) as well as the colon (yellow).

Biopsy in the pancreatic tail



Gangi-SoftGuard® is position at the level of the target lesion.



Coaxial biopsy of the target lesion is performed through the Gangi-SoftGuard® needle.

Case and image courtesy of Afshin Gangi, MD, University Hospital of Strasbourg, Strasbourg, France