

Use of Bonopty[®] Extended Drill

Before use, please read the Instructions For Use which accompany the product for indications, contraindications, warnings and precautions.

Caution: Federal law restricts this device to sale by or on the order of a physician.

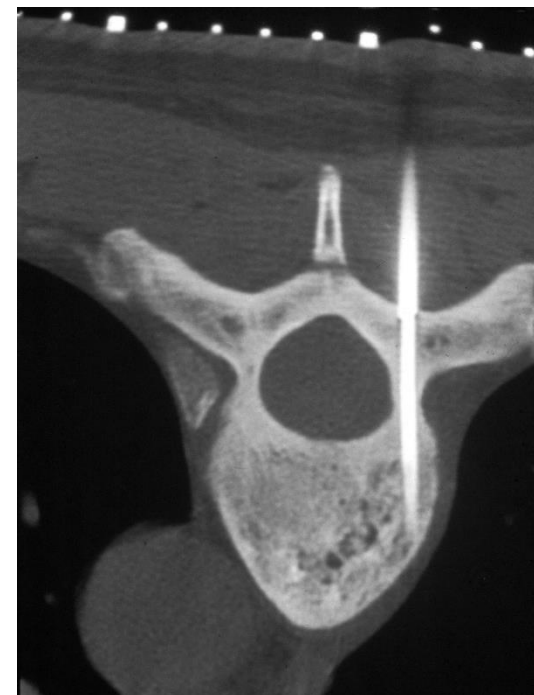
Apriomed
apriomed.com



Applications

Examples of procedures where Bonopty® Extended Drill may be a suitable choice :

- Deep and hard to reach sclerotic bone lesions
- Transsternal core biopsies
- Drilling into osteoid osteomas
- Lytic lesions of bone with an intact outer cortex



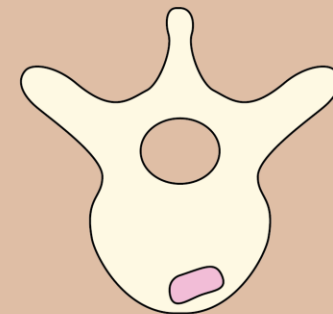
Bonopty® Extended Drill used to penetrate a thin sclerotic pedicle. Case courtesy of Dr. K.G. Åström and Dr. K. H. Ahlström, Uppsala University Hospital.

Introduction – Sampling a deep lesion



If a target lesion is located too far away to be able to approach using your standard Bonoptoy Penetration Set, it is still possible to make a biopsy at the desired point using Bonoptoy® Extended Drill.

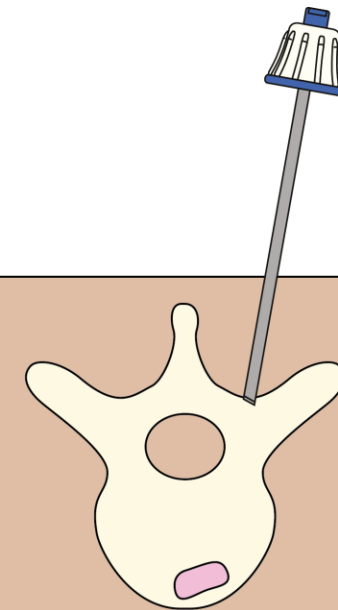
The following slides describe the use of Bonoptoy® Extended Drill to reach a target lesion deep in the vertebra.



Step 1



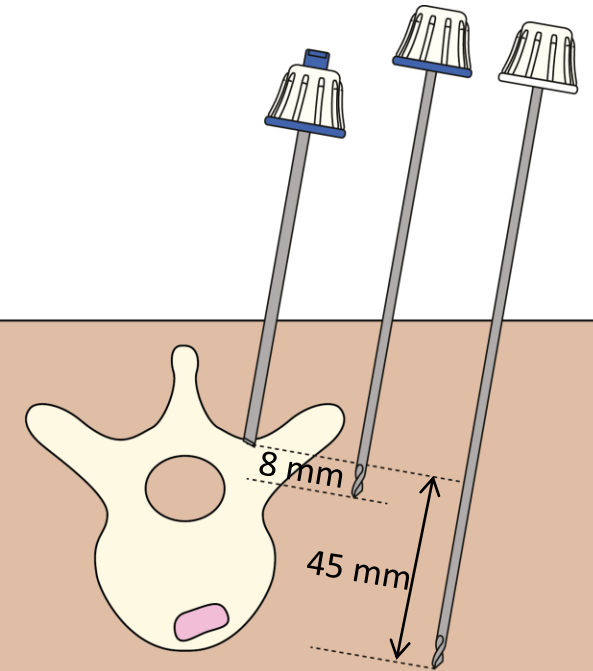
Position the Penetration Cannula as per normal routine.



Step 2

The difference in length between the shorter Drill provided with the Penetration Set and the Extended Drill is 37 mm.

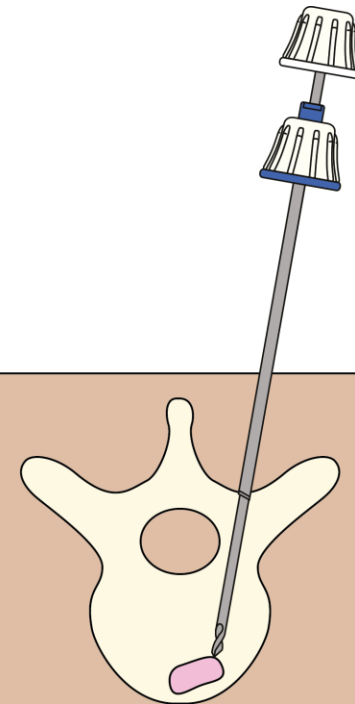
As seen in the picture, the extra length of the Extended Drill makes it possible to reach all the way through the vertebra.



Step 3

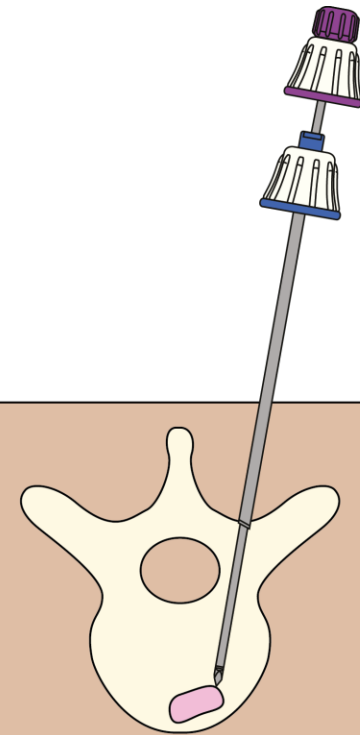
Insert the drill into the Penetration Cannula and drill through the vertebra using fingertip force only.

It is important to remember to withdraw the Extended Drill occasionally to clean off shavings. This can preferably be done using the Penetration Set stylet.



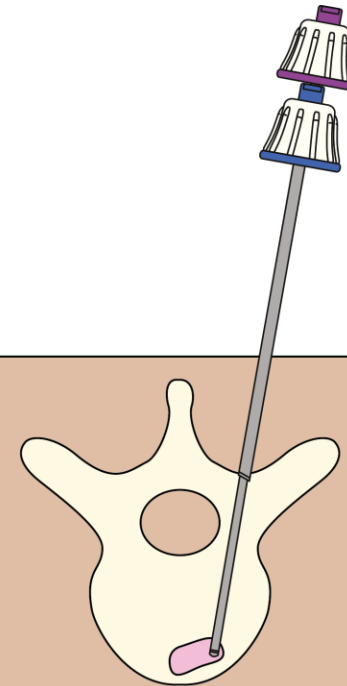
Step 4

The Extended Drill is removed and exchanged for the Biopsy Cannula with stylet inserted.



Step 5

When the Biopsy Cannula is correctly positioned, the stylet can be removed and biopsy can be performed.



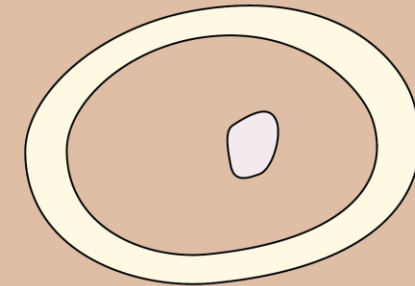
Introduction – Sampling a very sclerotic lesion



Bonopty® Extended Drill may also be used to sample sclerotic lesions.

If a lesion proves to be too hard to be possible to sample using the Biopsy Set, it is still possible to complete the sampling using the Extended Drill.

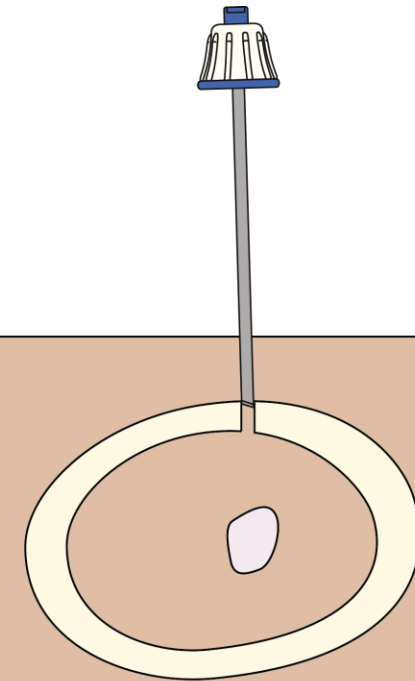
The following slides describes the procedure.



Step 1



Start the procedure as per normal routine.

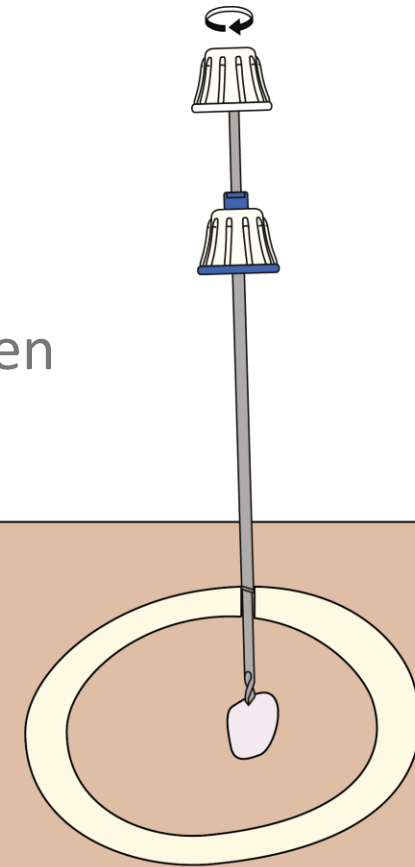


Step 2

Insert the Extended Drill through the Penetration Cannula.

Sample the target by rotating the drill 2-3 turns to fill the helices of the drill with the sclerotic specimen material.

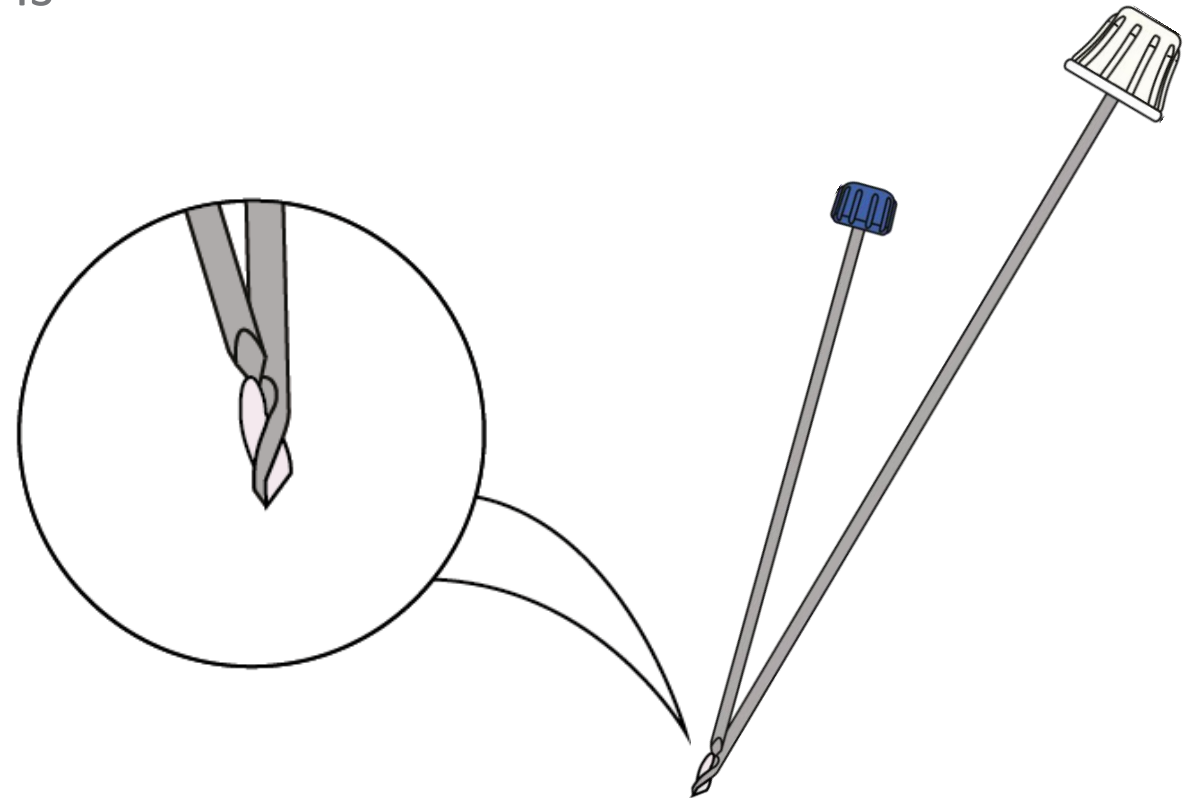
Do not make too many rotations as this will pack the specimen too hard in the helices.



Step 3

Retract the Extended Drill and remove the sample obtained in the helices. This is preferably done using the Penetration Set Stylet.

If necessary, repeat the procedure to obtain more specimen.



About



AprioMed

AprioMed develops, manufactures, markets and sells innovative medical devices and related services within the field of interventional radiology. We aim to deliver, in close collaboration with healthcare practitioners, innovative, quality tools to achieve optimal solutions for radiologists worldwide.

apriomed.com