

Procedural Information

Location: Uppsala, Sweden
Hospital: Uppsala University Hospital
Physician: Dr K. Gunnar O. Åström
Dr K. Håkan Ahlström

Clinical Case Review 6

Transsternal core biopsies

Case Description

Case history

Known renal carcinoma. New retro-sternal lesion (lesion in the anterior mediastinum).

Biopsy details

Bonopty® Extended Drill was used for a controlled, length-matched sternal penetration. This was then exchanged for Bonopty® Biopsy Cannula (of the same length). Core biopsies were obtained with an automatic cutting needle through Bonopty® Biopsy Cannula.

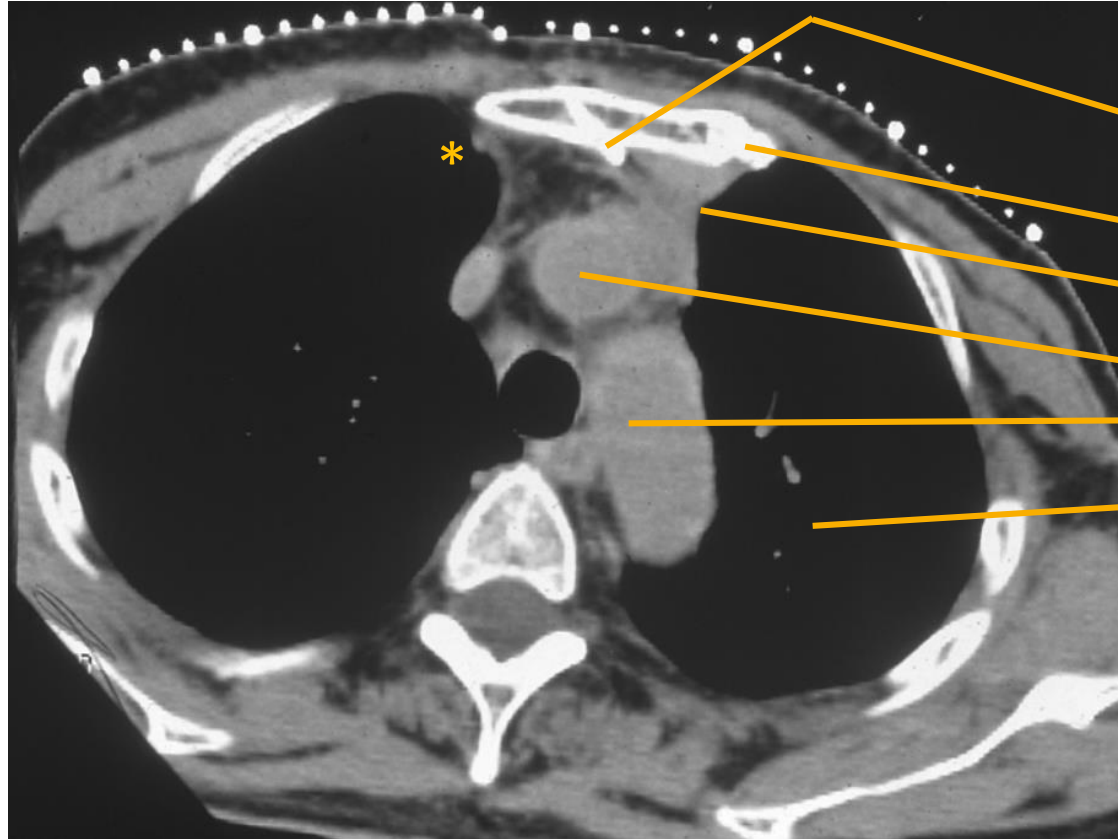
Analysis of the samples

Metastasis was diagnosed.

Comments

Bonopty® Biopsy System was tilted to ensure a safe throw, avoiding the aortic arch and pleura (lungs). This approach could be an alternative to mediastinoscopy on lesions not accessible using a parasternal percutaneous approach. The latter presents a greater risk of injuring the internal mammary vessels* or of pneumothorax.

Transsternal core biopsies



CT scan of the thorax

Tilted Bonopty® Biopsy Cannula

Sternum

Lesion

Aortic arch

Thoracic cavity

Case and image courtesy of Dr K. Gunnar O. Åström and Dr K. Håkan Ahlström, Uppsala University Hospital, Sweden.