

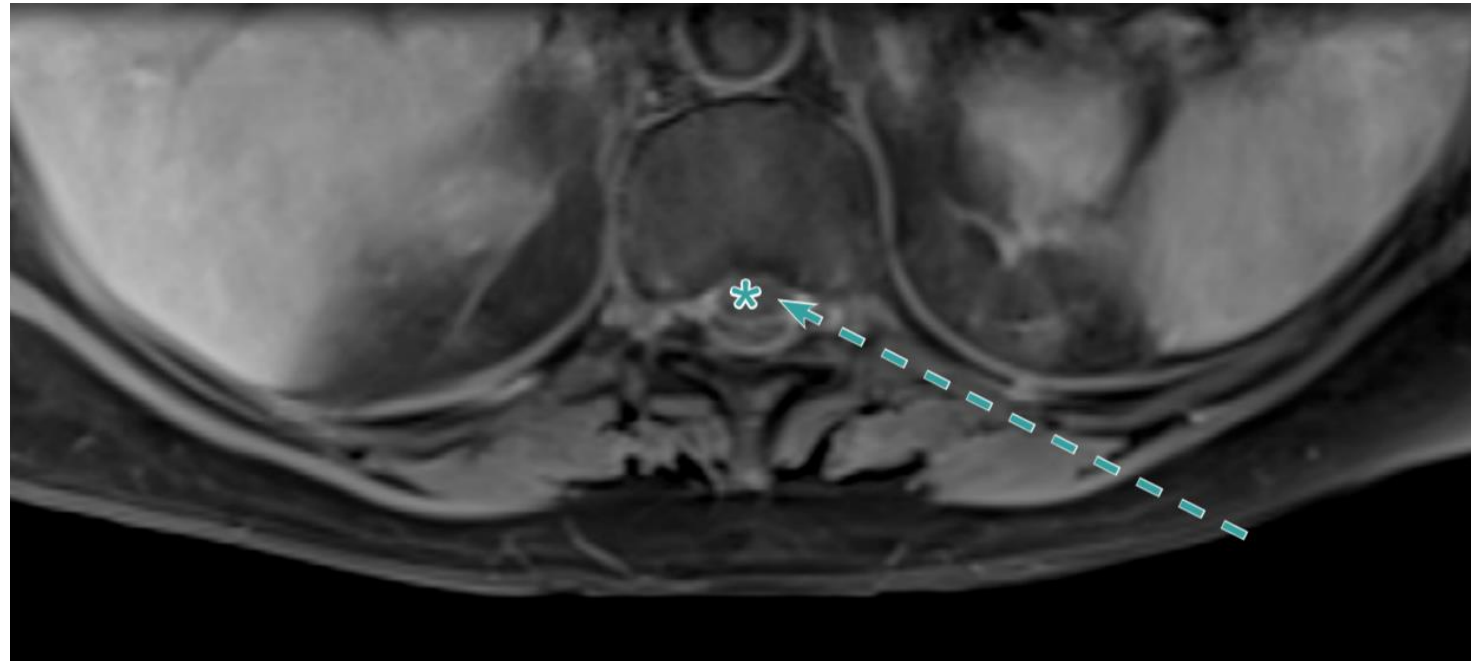
Biopsy in the spinal canal

Procedural Information

Date of procedure: August 2016
Location: Strasbourg, France
Hospital: University Hospital
of Strasbourg
Physician: Guillaume Koch, MD

Case Description

In this case, Gangi-SoftGuard[®] was used for lung biopsy. The target was accessible through a fibrotic scar to limit the risk of pneumothorax, but the needle path towards the target interfered with the thoracic artery. The use of Gangi-SoftGuard[®] and its spring-loaded blunt tip stylet made it possible to safely pass the needle to the target, avoiding damage to the thoracic artery.



Target mass in the anterior part of the spinal canal marked with asterisk. The approach (dotted arrow) will go through the foramina that contains vessels and nerves.

Biopsy in the spinal canal



Gangi-SoftGuard® is advanced. From the moment the needle enters the foramina (fourth image) the blunt tip is maintained exposed to avoid puncture any vessel or nerve.

Biopsy in the spinal canal



Gangi-SoftGuard® is advanced in the mass.



Coaxial biopsy is performed through the Gangi-SoftGuard® needle.

Case and image courtesy of Guillaume Koch, MD, University Hospital of Strasbourg, Strasbourg, France