

## CLINICAL CASE REVIEW 5

# BIOPSY IN THE SPINAL CANAL

Gangi-SoftGuard®  
Coaxial Needle

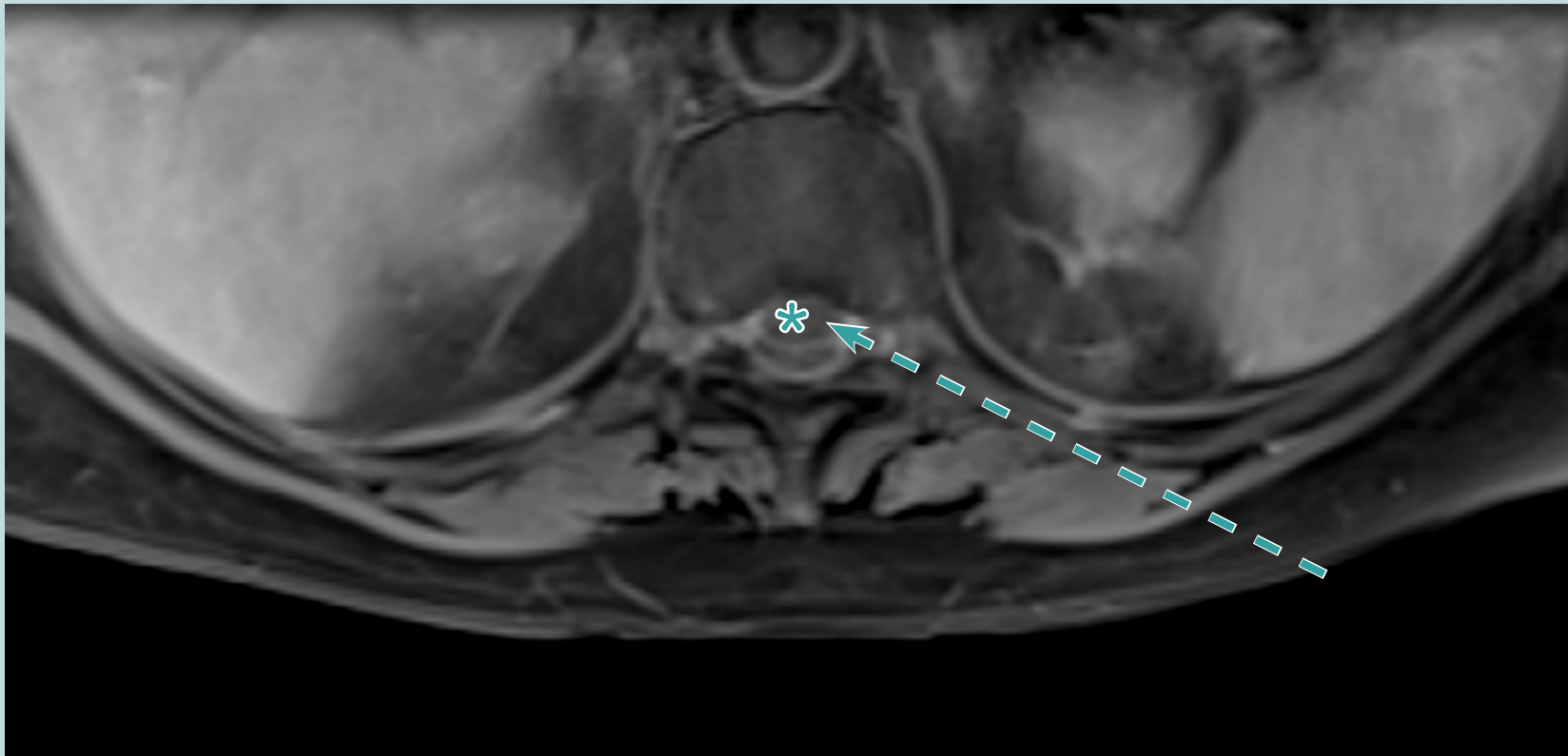
### PROCEDURAL INFORMATION

Date of procedure	August 2016
Location	Strasbourg, France
Hospital	University Hospital of Strasbourg
Physician	Guillaume Koch, MD

### CASE DESCRIPTION

In this case, Gangi-SoftGuard® was used for biopsy in the spinal canal. To access the lesion, advancement through the foramina containing sensitive vessels and nerves was needed.

The use of Gangi-SoftGuard® and its spring-loaded blunt tip stylet made it possible to safely pass the needle to the target, avoiding damage to vessels and nerves.



*Target mass in the anterior part of the spinal canal marked with asterisk. The approach (dotted arrow) will go through the foramina that contains vessels and nerves.*



*Gangi-SoftGuard® is advanced. From the moment the needle enters the foramina (fourth image) the blunt tip is maintained exposed to avoid puncture any vessel or nerve.*



*Gangi-SoftGuard® is advanced in the mass.*



*Coaxial biopsy is performed through the Gangi-SoftGuard® needle.*