

CLINICAL CASE REVIEW 4

LUNG BIOPSY

Gangi-SoftGuard®
Coaxial Needle

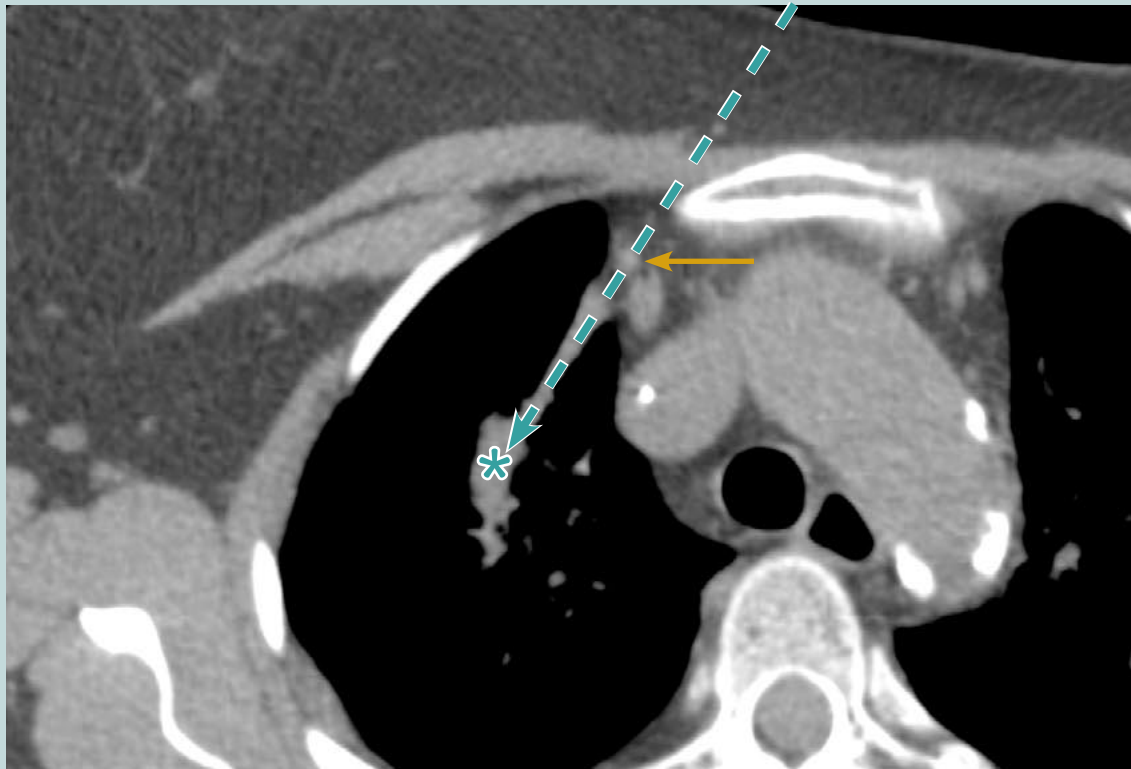
PROCEDURAL INFORMATION

Date of procedure	August 2016
Location	Strasbourg, France
Hospital	University Hospital of Strasbourg
Physician	Julien Garnon, MD

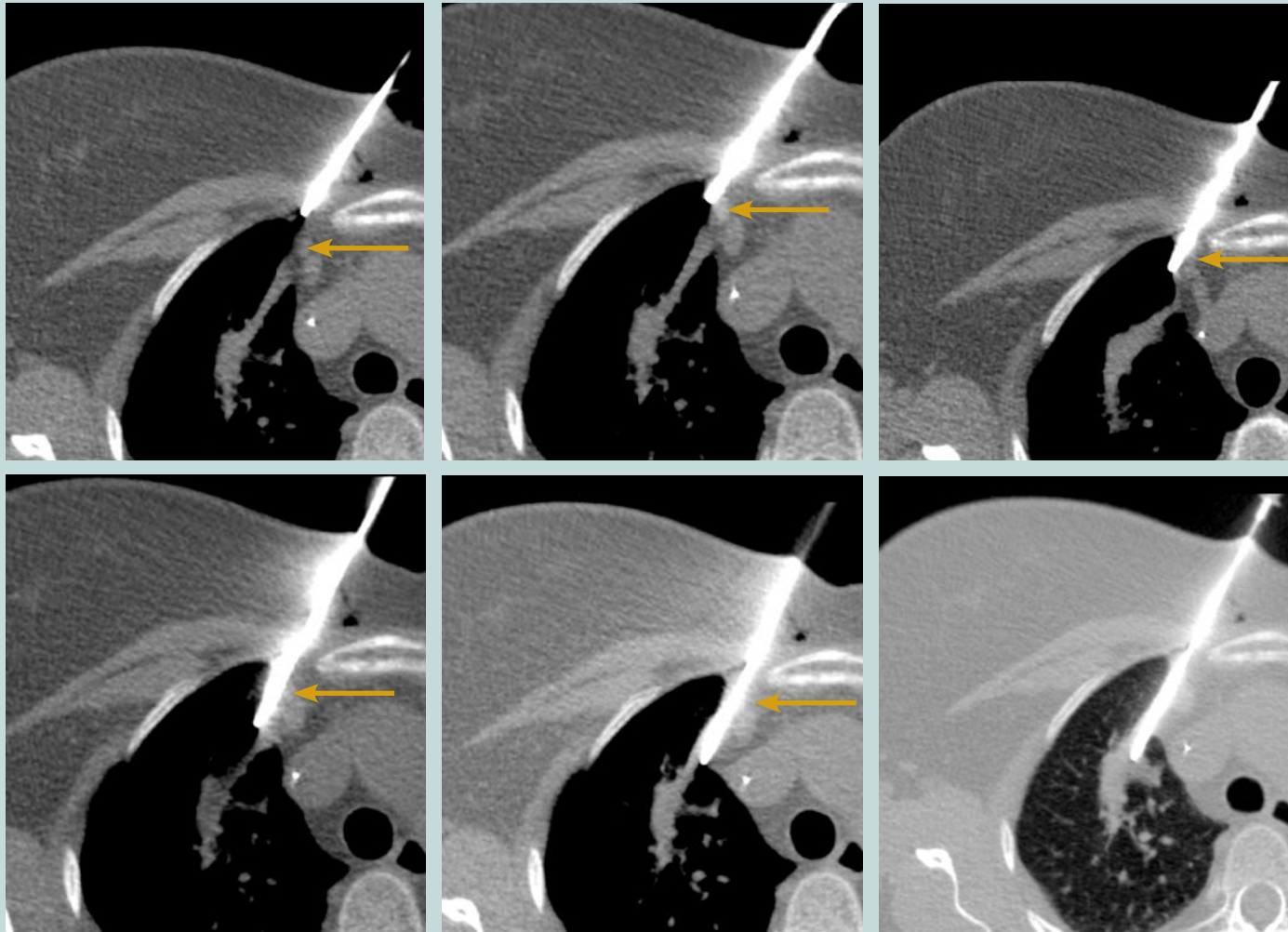
CASE DESCRIPTION

In this case, Gangi-SoftGuard® was used for lung biopsy. The target was accessible through a fibrotic scar to limit the risk of pneumothorax, but the needle path towards the target interfered with the thoracic artery.

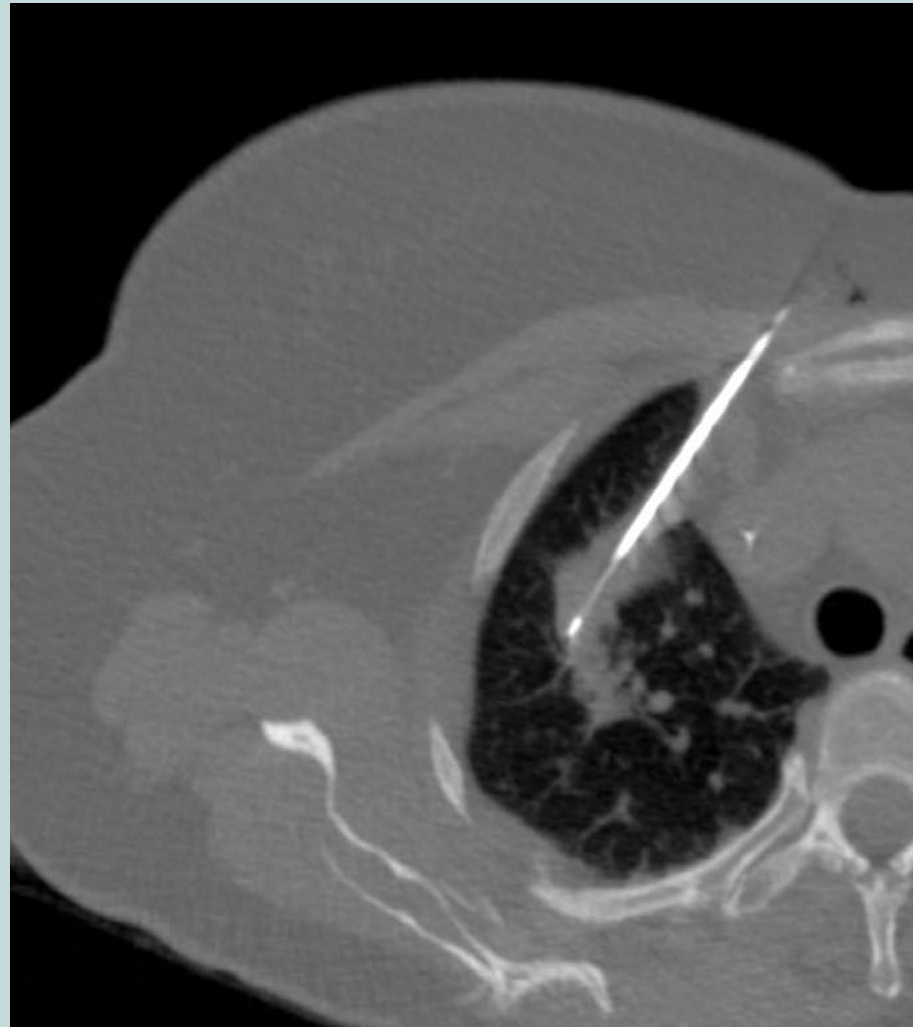
The use of Gangi-SoftGuard® and its spring-loaded blunt tip stylet made it possible to safely pass the needle to the target, avoiding damage to the thoracic artery.



Lung lesion (asterisk) accessible through a fibrotic scar (dotted arrow), which would limit the risk of pneumothorax. However the internal thoracic artery (yellow) is in the way.



Gangi-SoftGuard[®] is advanced. Once the muscle has been punctured, the blunt tip is exposed the whole time to go round the artery and reach the lesion.



Biopsy is performed through the Gangi-SoftGuard® needle.