

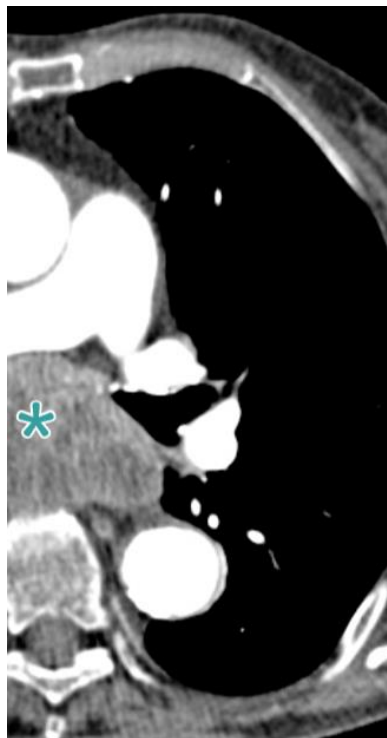
Mediastinal biopsy

Procedural Information

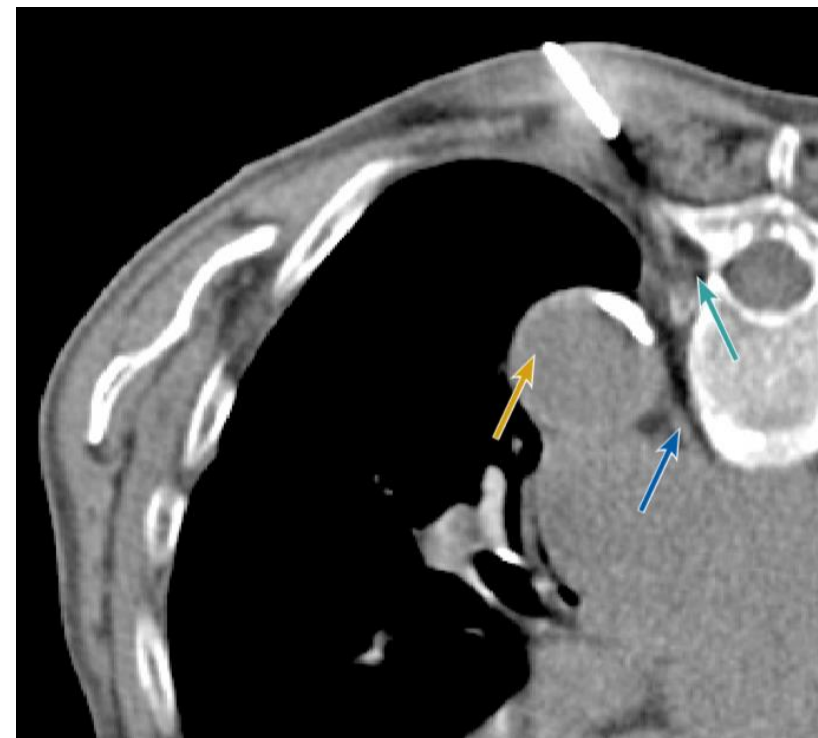
Date of procedure: August 2016
Location: Strasbourg, France
Hospital: University Hospital of Strasbourg
Physician: Julien Garnon, MD

Case Description

In this case, Gangi-SoftGuard® was used for biopsy of a mediastinal mass. The passage to the target is close to several sensitive structures such as the foramina, the aorta and the hemiazygos vein. Use of the spring-loaded blunt tip stylet made it possible to safely pass the needle close to these sensitive structures.

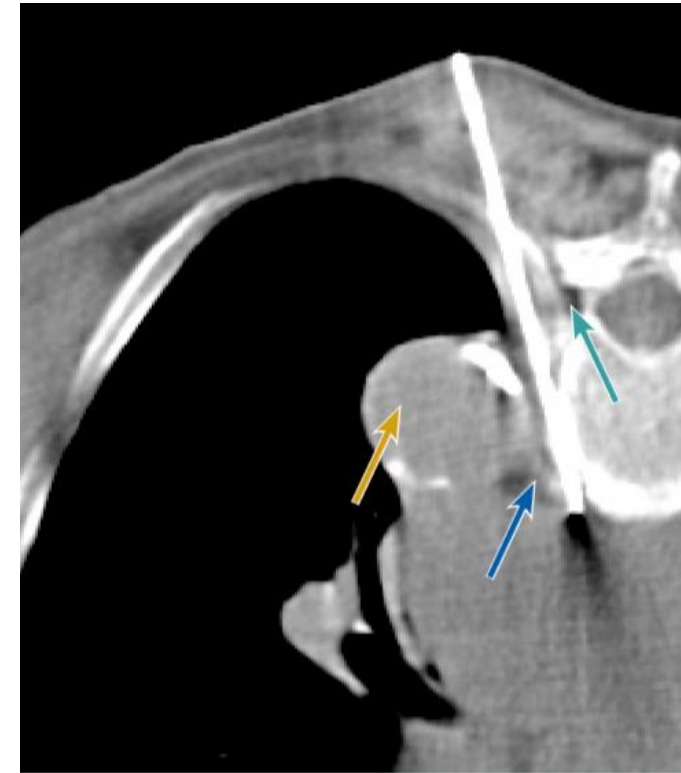


Target point in the mediastinal mass marked with asterisk.



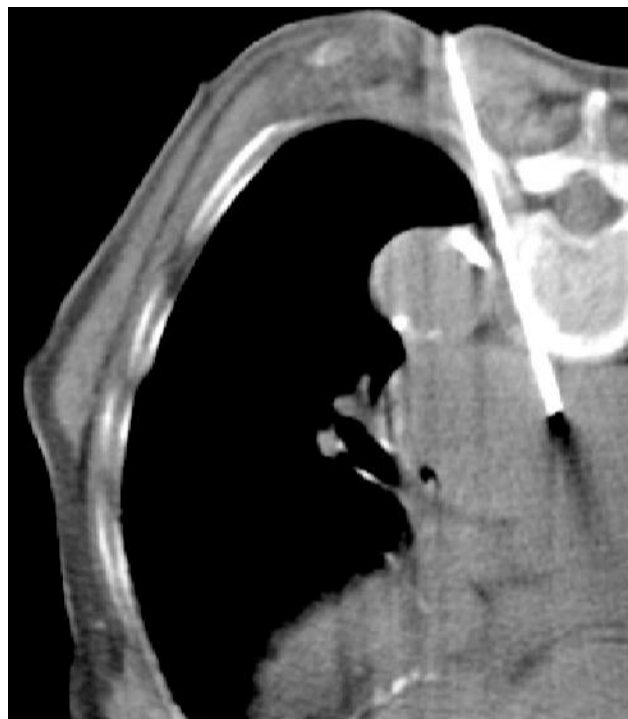
Gangi-SoftGuard® is inserted. The passage to the target contains several sensitive structures: vessels close to the foramina (turquoise), the aorta (yellow) and the hemiazygos vein (blue)

Mediastinal biopsy



Gangi-SoftGuard[®] is advanced in the fat with the spring-loaded blunt tip stylet inserted to avoid damage to the vessels close to the foramina (turquoise), the aorta (yellow) and the hemiazygos vein (blue)

Mediastinal biopsy



Gangi-SoftGuard® is advanced within the mediastinal mass.



Biopsy is performed through the Gangi-SoftGuard® needle.

Case and image courtesy of Julien Garnon, MD, University Hospital of Strasbourg, Strasbourg, France