

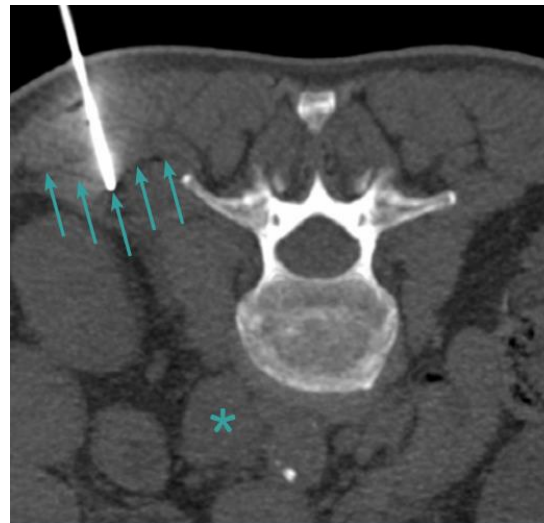
Retroperitoneal biopsy

Procedural Information

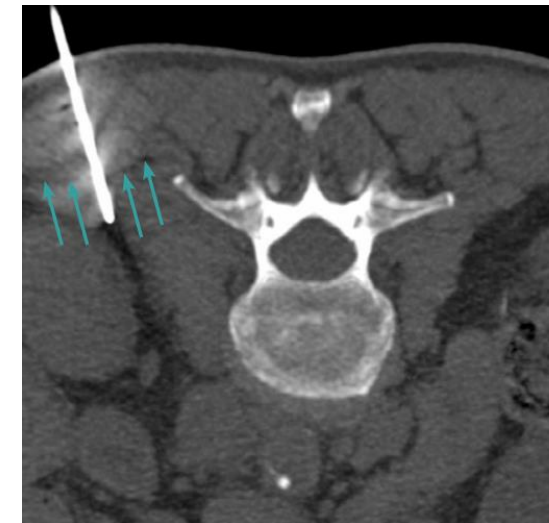
Date of procedure: August 2016
Location: Strasbourg, France
Hospital: University Hospital of Strasbourg
Physician: Julien Garnon, MD

Case Description

in this case, Gangi-SoftGuard® was used for retroperitoneal biopsy of a lymph node. Use of the spring-loaded blunt tip stylet made it possible to safely pass the needle close to the ureters and a vessel.



Gangi-SoftGuard® is inserted with with the spring-loaded blunt tip stylet. The soft tip deforms the intermuscular fascia (arrows) without damaging the tissue. Lesion in lymph node marked with asterisk.



The blunt tip springs back into needle to expose the beveled needle tip. The beveled tip is used to penetrate the fascia. After penetration, the fascia relaxes into its initial position (arrows).

Gangi-SoftGuard®

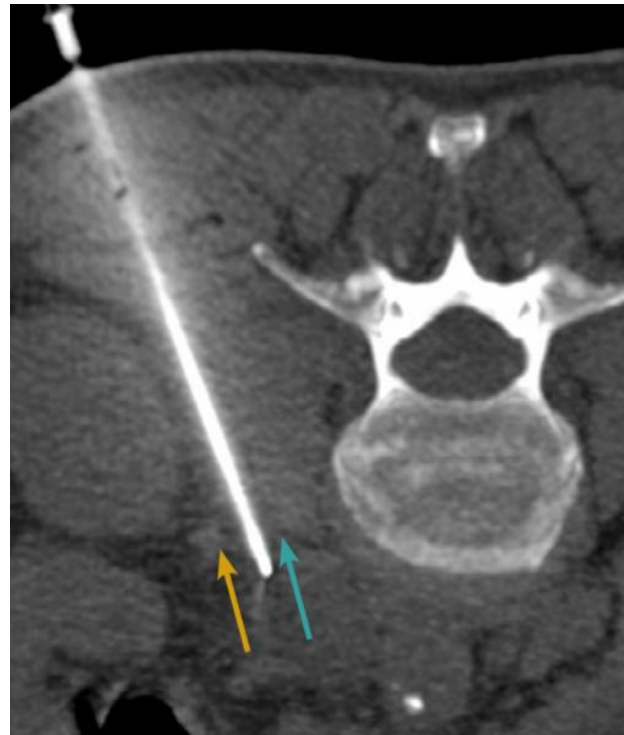
Coaxial Needle

Clinical Case Review 1

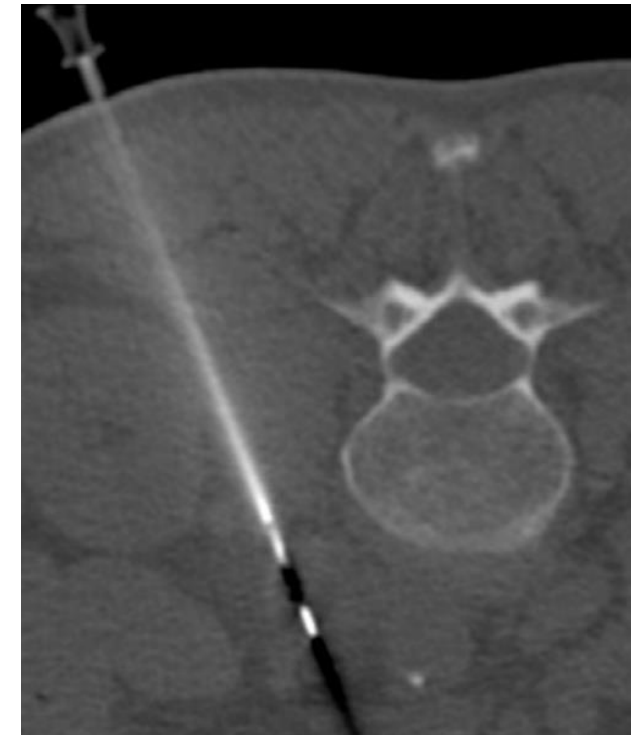
Retroperitoneal biopsy



Gangi-SoftGuard® is advanced with the springloaded blunt tip stylet exposed, safely avoiding the uretea (yellow) and a small vessel (turquoise).



Gangi-SoftGuard® is advanced until the lymph node is touched.



Coaxial biopsy is performed through the Gangi-SoftGuard® needle.

Case and image courtesy of Julien Garnon, MD, University Hospital of Strasbourg, Strasbourg, France

apriomed.com

Indication for use: As a guiding needle in obtaining core biopsy samples from soft tissue such as liver, kidney, spleen, lymph nodes and various soft tissue lesions. Before using Gangi-SoftGuard® read the instructions for use which accompany the product for indications, contraindications, warnings and precautions. Gangi-SoftGuard® is a registered trademark of AprioMed AB. Patents pending.

AprioMed 