

RETROPERITONEAL BIOPSY

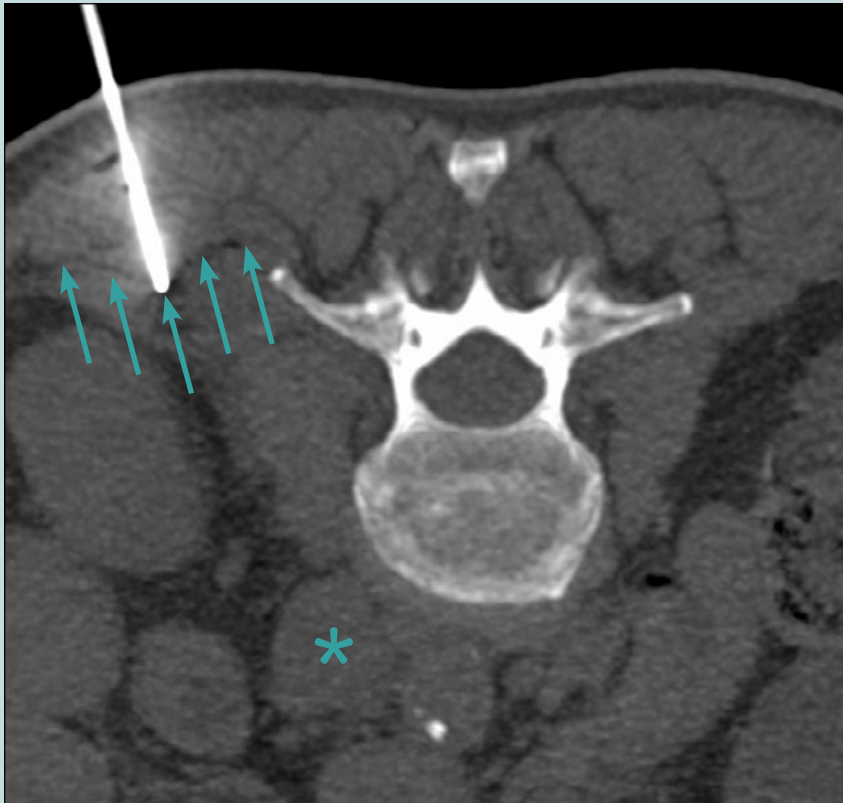
PROCEDURAL INFORMATION

Date of procedure	August 2016
Location	Strasbourg, France
Hospital	University Hospital of Strasbourg
Physician	Julien Garnon, MD

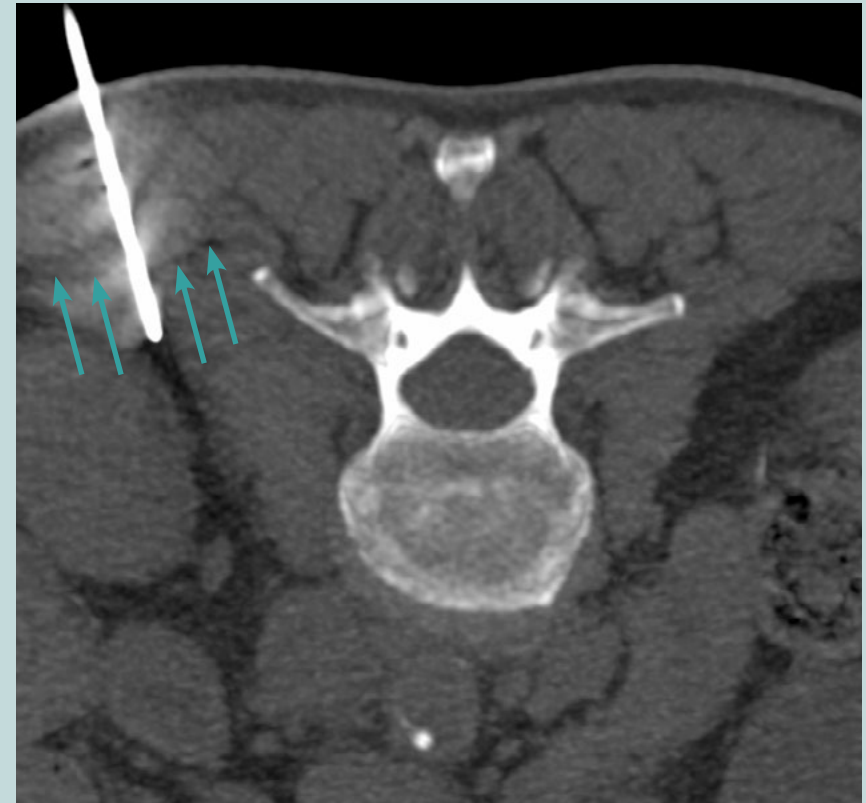
CASE DESCRIPTION

In this case, Gangi-SoftGuard® was used for retroperitoneal biopsy of a lymph node.

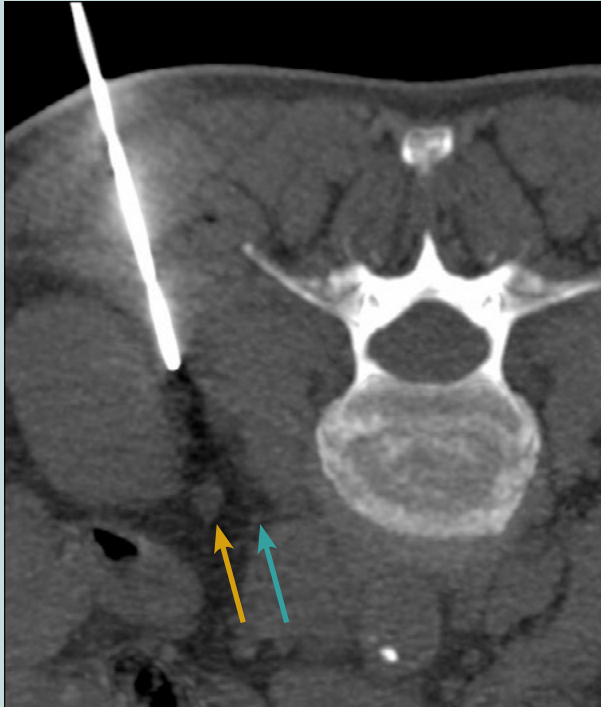
Use of the spring-loaded blunt tip stylet made it possible to safely pass the needle close to the ureters and a vessel.



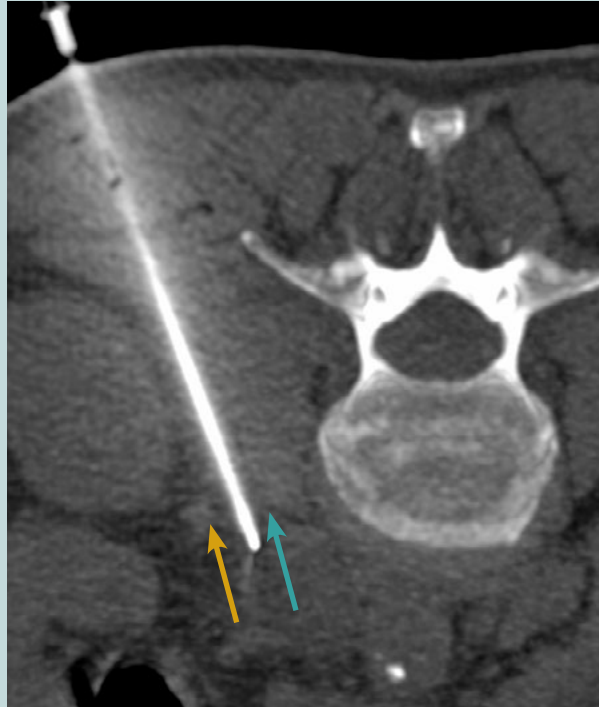
Gangi-SoftGuard® is inserted with with the spring-loaded blunt tip stylet. The soft tip deforms the intermuscular fascia (arrows) without damaging the tissue. Lesion in lymph node marked with asterisk.



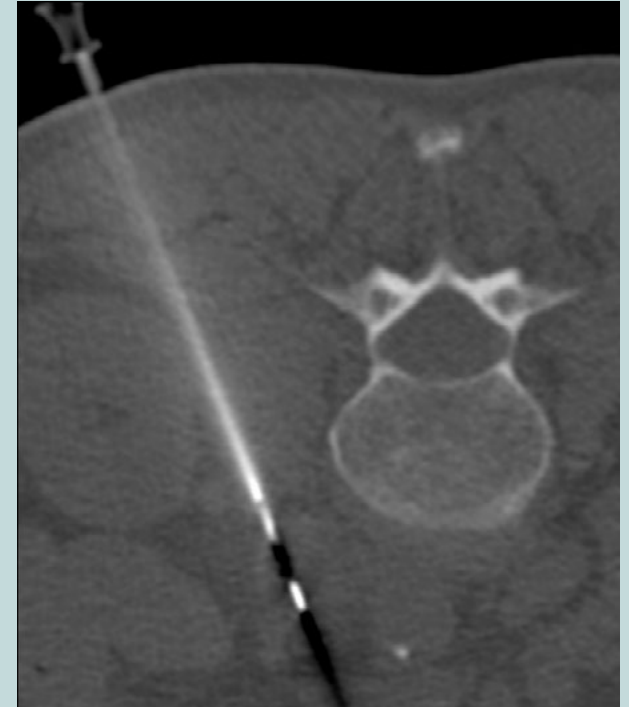
The blunt tip springs back into needle to expose the beveled needle tip. The beveled tip is used to penetrate the fascia. After penetration, the fascia relaxes into its initial position (arrows).



Gangi-SoftGuard® is advanced with the spring-loaded blunt tip stylet exposed, safely avoiding the ureter (yellow) and a small vessel (turquoise).



Gangi-SoftGuard® is advanced until the lymph node is touched.



Coaxial biopsy is performed through the Gangi-SoftGuard® needle.