

Morrison

Steerable Needle®

Procedural Information

Date of procedure: June 2016
Location: Philadelphia, PA, USA
Hospital: Thomas Jefferson University Hospital
Physician: William B. Morrison, MD

Clinical Case Review 6

Sacroiliac joint injection

Case Description

Case history

76-year-old male with severe right lower back pain localized to the sacroiliac joint. Previous imaging showed osteoarthritis at the joint. A diagnostic and therapeutic injection was requested.

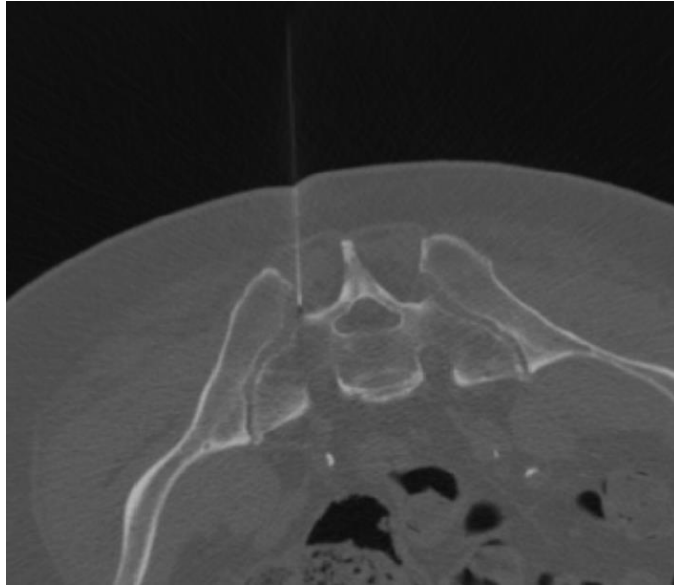
Procedural details

CT showed that the inferior, synovial portion of the joint was very arthritic, with spurs limiting access. The midportion of the joint allowed access, but only with a curved approach. Morrison Steerable Needle® was advanced in straight fashion, without the curved deployed, and was positioned at the entry to the joint using CT guidance. Curve was then applied to Morrison Steerable Needle®, and needle was advanced into the synovial portion of the joint. Injection of contrast showed opacification of the joint confirming proper positioning. Bupivacaine and Kenalog was then successfully injected into the joint.

Results and comments

In this case, a curved approach was the only way to reach the open part of the joint. Morrison Steerable Needle® enabled the use of such a curved approach. The target was reached and injection was successfully performed.

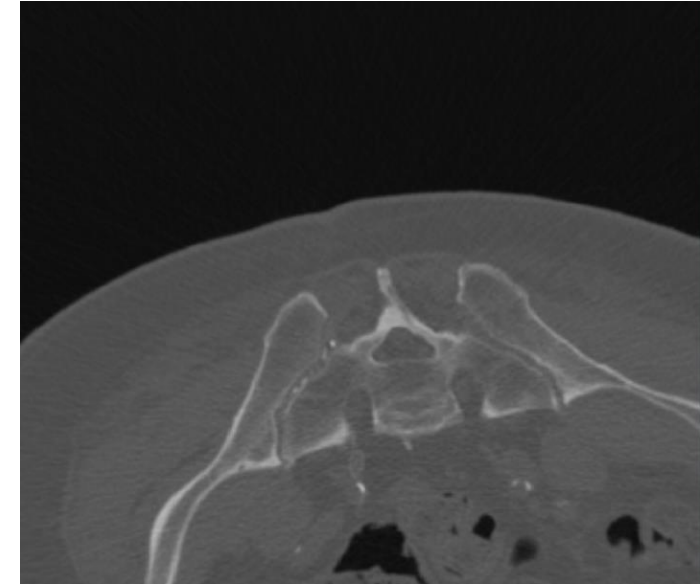
Sacroiliac joint injection



Morrison Steerable Needle® is advanced in straight fashion, positioned just outside of the sacroiliac joint at its midportion.



Morrison Steerable Needle® is curved and advanced into the synovial portion of the joint.



Contrast visualized within the joint following injection.

Case and image courtesy of William B. Morrison, Thomas Jefferson University Hospital, Philadelphia, PA, USA.