

Therapeutic nerve block, L5 right

Procedural Information

Date of procedure: November 2014
Location: Uppsala, Sweden
Hospital: Uppsala University Hospital
Physician: Dr. Abdsaleh Shahin

Case Description

Case history

The patient was experiencing radicular pain along a right L5 distribution and was referred for a therapeutic nerve block. However, a transitional segment at the lumbosacral junction left very little room for entry into the neural foramen.

Procedural details

Morrison Steerable Needle® was used for CT-guided access at the L5-S1 level on the right side. The tip of Morrison Steerable Needle® was inserted into the neural foramen. The curve was deployed, allowing for closer approximation to the L5 nerve root. A suspension of 1 ml Marcaine and 1 ml Depo-Medrol was then successfully injected. No procedural complications occurred.

Results and comments

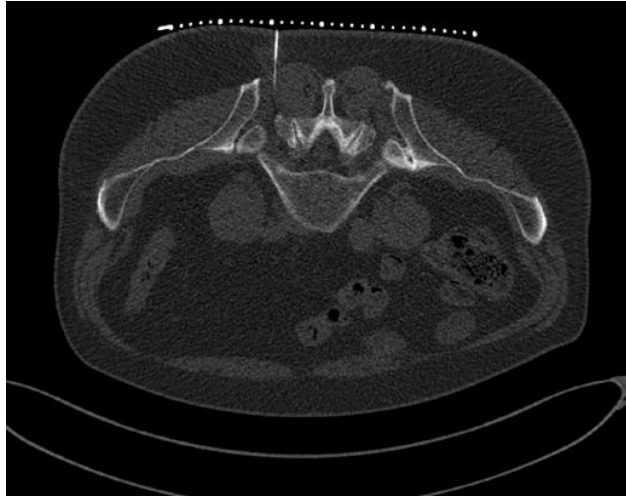
In this procedure, Morrison Steerable Needle® enabled controlled needle advancement, carefully curving around bony obstacles in the L5-S1 foramen allowing for precise placement of the needle tip.

Morrison

Steerable Needle®

Clinical Case Review 2

Therapeutic nerve block, L5 right



Morrison Steerable Needle® inserted and advanced straight towards region of interest.



Morrison Steerable Needle® is slightly curved and carefully advancing in the L5 area.



Needle tip is positioned close to the intraforaminal part of L5 nerve.

Case and image courtesy of Dr. Abdsaleh Shahin, Uppsala University Hospital, Uppsala, Sweden

apriomed.com

Before using Morrison Steerable Needle® read the instructions for use which accompany the product for indications, contraindications, warnings and precautions Morrison Steerable Needle® is a registered trademark of AprioMed AB. Patents pending.

AprioMed 