

# THERAPEUTIC NERVE BLOCK, L5 RIGHT

## Procedural information

Date of procedure	November 2014
Location	Uppsala, Sweden
Hospital	Uppsala University Hospital
Physician	Dr. Abdsaleh Shahin

## Case history

The patient was experiencing radicular pain along a right L5 distribution and was referred for a therapeutic nerve block. However, a transitional segment at the lumbosacral junction left very little room for entry into the neural foramen.

## Procedural details

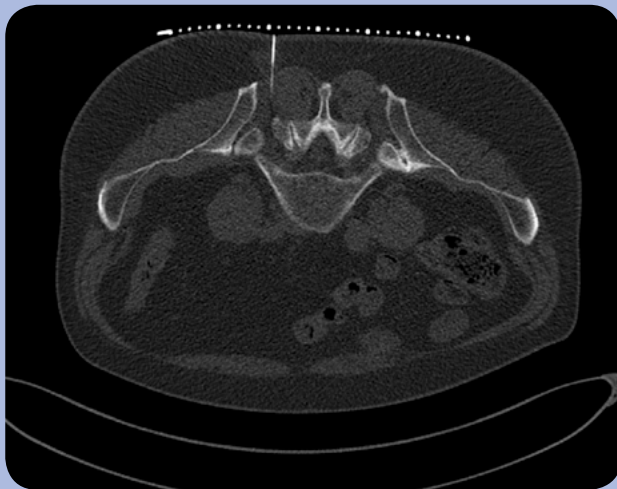
Morrison Steerable Needle™ was used for CT-guided access at the L5-S1 level on the right side.

The tip of Morrison Steerable Needle™ was inserted into the neural foramen. The curve was deployed, allowing for closer approximation to the L5 nerve root.

A suspension of 1 ml Marcaine and 1 ml Depo-Medrol was then successfully injected. No procedural complications occurred.

## Results and comments

In this procedure, Morrison Steerable Needle™ enabled controlled needle advancement, carefully curving around bony obstacles in the L5-S1 foramen allowing for precise placement of the needle tip.



*Morrison Steerable Needle™ inserted and advanced straight towards region of interest.*



*Morrison Steerable Needle™ is slightly curved and carefully advancing in the L5 area.*



*Needle tip is positioned close to the intraforaminal part of L5 nerve.*