

Bonopty®

Access for RF ablation of left scapula plasmacytoma

Case history

56 year old male with a history of multiple myeloma and intractable left shoulder pain, referred for RF ablation of known lytic lesions in the left scapula.

Procedure details

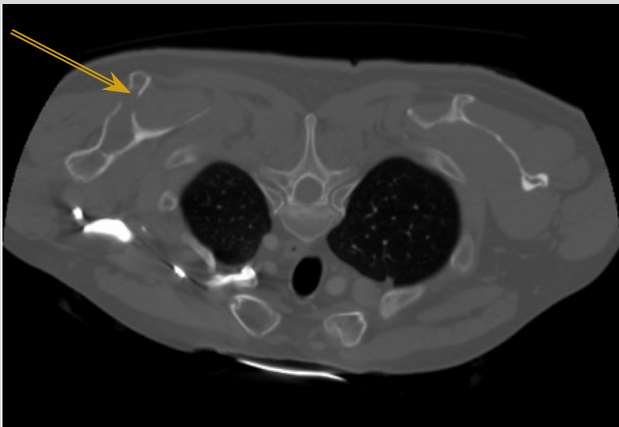
The 6.5 cm Bonopty® “short” Penetration Set (art no 10-1062) was used to access a superficial lytic lesion in the left scapula. The procedure was performed from a posterior approach with the patient in the prone position.

Analysis of the procedure

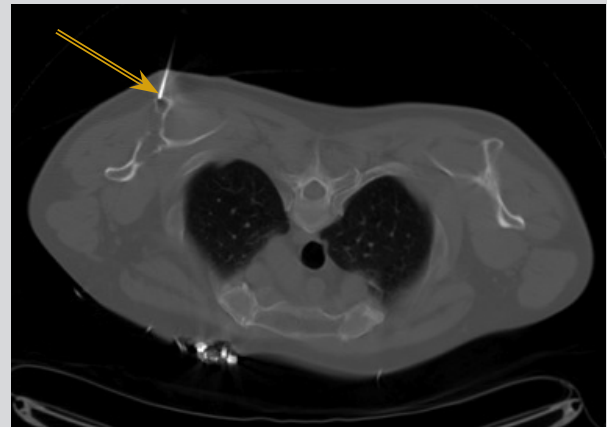
Biopsy sample was not obtained at the time of the procedure. The lesion had been previously sampled. Once access was gained with the 6.5 cm Bonopty® “short” Penetration Set, the therapeutic RF ablation procedure was performed without difficulty.

Comments

The shorter Bonopty® 6.5 cm Penetration Set (art no 10-1062) provided proper access to the bone and the stability needed for the ablation procedure of the superficial lytic lesion in the left scapula.



CT image showing multiple myeloma in left scapula.



Bonopty® “short” Penetration Set (art no 10-1062) accessing the lesion and creating a path for ablation probe.

Acknowledgements:
Courtesy of K.C. Horne, M.D., and David Fang, M.D., Methodist University Hospital, Memphis, TN, USA

29197 Rev. 01 2011-10

Head Office:
AprioMed AB
Virdings Allé 28
SE-754 50 Uppsala, Sweden
Phone: +46 18 430 14 40
Free Fax (Int'l): +46 770 339972

E-mail: info@apriomed.com
www.apriomed.com

US Sales Office:
AprioMed, Inc.
2 Palmer Dr, Suite 1a
Londonderry, NH 03053, USA
Phone: +1 603 421 0875
Fax (US toll free): 866 239 1797