

Procedural Information

Location: Uppsala, Sweden
Hospital: Uppsala University Hospital
Physician: Dr K. Gunnar O. Åström
Dr K. Håkan Ahlström

Clinical Case Review 2

Multiple sampling/passing a sclerotic lesion

Case Description

Case history

Patient with a sclerotic lesion in the pelvis.

Biopsy details

Three samples were obtained with BonOpty[®] Biopsy Cannula, each progressively deeper as the sclerotic lesion was penetrated (third sample from beyond the sclerotic area).

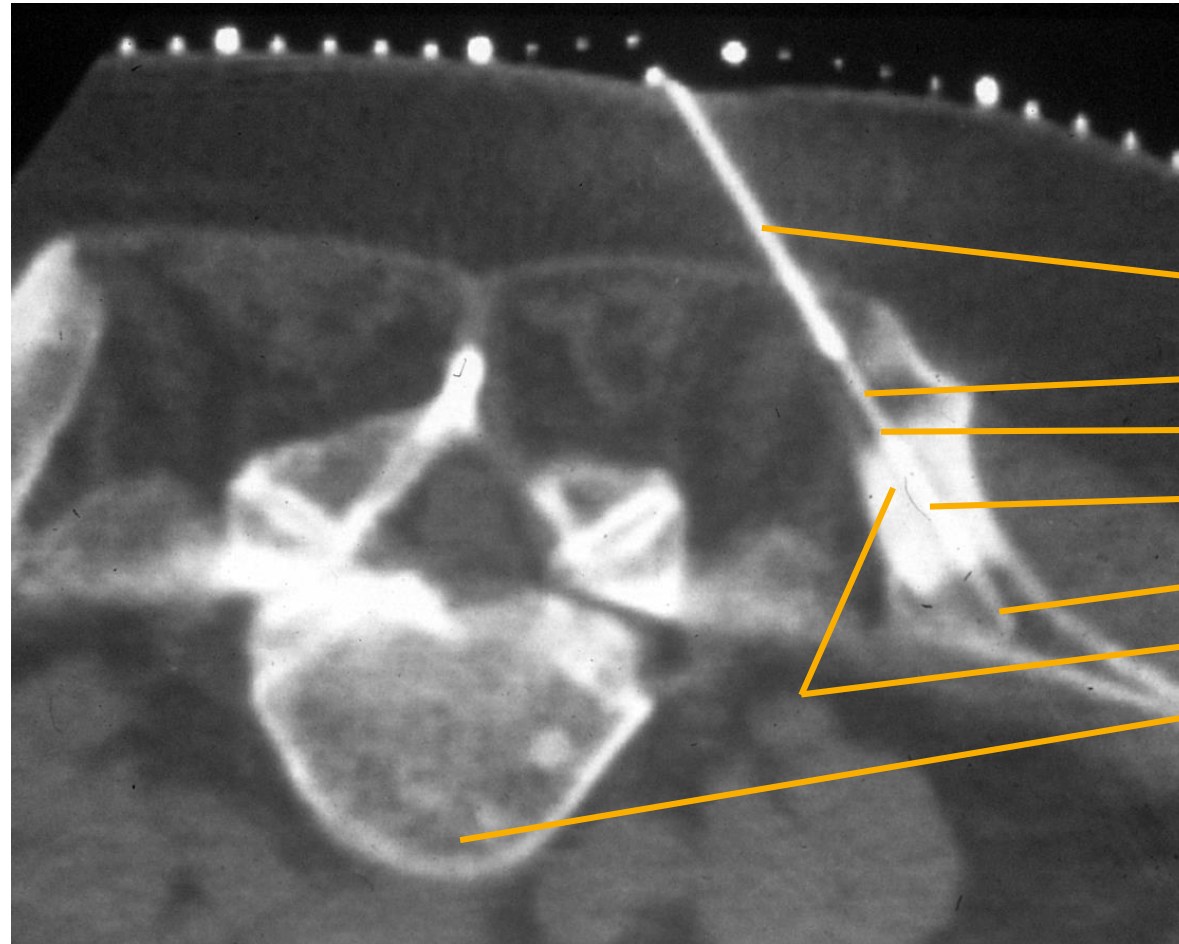
Analysis of the samples

The lesion was diagnosed as a carcinoid metastasis.

Comments

Multiple biopsies were easily performed through the anchored Bonopty[®] Penetration Cannula. It was possible to pass and repeatedly sample this sclerotic lesion with Bonopty[®] Biopsy Cannula. The outer reduction of the Bonopty[®] Biopsy Cannula facilitates passage of the cannula through sclerotic lesions.

Multiple sampling/passing a sclerotic lesion



CT scan of the pelvis (posterior iliac crest)

Bonopty® Penetration Cannula

Bonopty® Biopsy Cannula

1st sample

2nd sample

3rd sample

Sclerotic lesion 5th

Lumbar vertebra

Case and image courtesy of Dr K. Gunnar O. Åström and Dr K. Håkan Ahlström, Uppsala University Hospital.